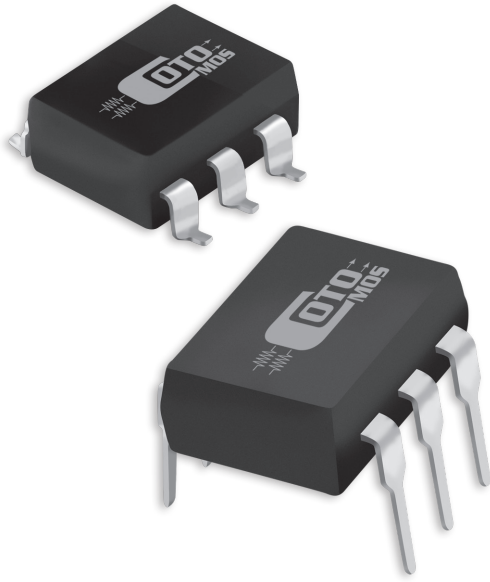


CotoMOS® CT136HT/CS136HT

The CT136HT and CS136HT combine Coto quality and economy in an industry standard 6 pin DIP package. Both the CT136HT and the CS136HT offer low on resistance and high load current. The CT136HT utilizes a thru hole lead configuration, while the CS136HT offers a surface mount option when the application requires it. Both relays are ideally suited to the needs of Test and Measurement, Industrial, and Telecommunications.

CT136HT/CS136HT Features

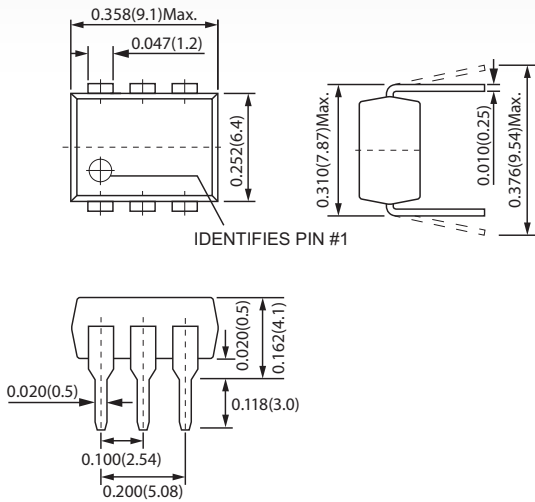
- ▶ Contact Form: 1A
- ▶ Load Voltage: 60V Maximum
- ▶ Operation LED Current: 8.0mA Maximum
- ▶ Load Current: 500mA Maximum
- ▶ On-Resistance: 0.3Ω Maximum
- ▶ Low Off-State Leakage Current: 10μA Maximum
- ▶ I/O Breakdown Voltage: 3750Vrms Minimum
- ▶ Suffix - H for I/O Breakdown Voltage: 5000Vrms Minimum



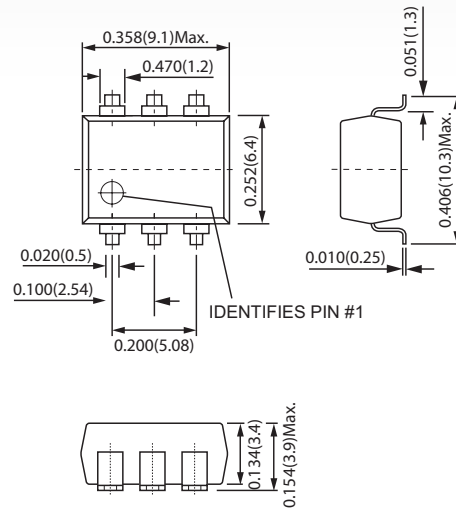
DIMENSIONS

in Inches (Millimeters)

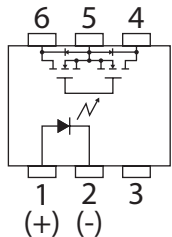
CT136HT



CS136HT

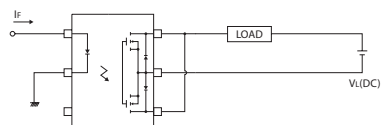
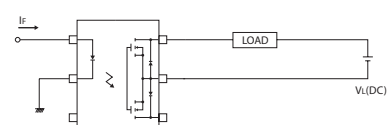
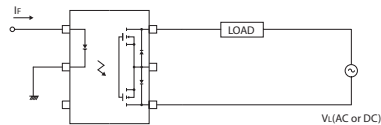


TERMINAL IDENTIFICATION



1: Anode (LED) 4,6: Drain (MOS FET)
2: Cathode (LED) 5: Source (MOS FET)
3: NC

CONNECTIONS



CT136HT/CS136HT MAXIMUM RATINGS (Ambient Temperature: 25°C)			
Parameters	Symbol	Units	Value
INPUT SPECIFICATIONS			
Continuous LED Current	I _F	mA	25
Peak LED Current	I _{FP} (F=100 Hz,Duty=1%)	mA	250
LED Reverse Voltage	V _R	V	5
Input Power Dissipation	P _{in}	mW	38
OUTPUT SPECIFICATIONS			
Load Voltage	V _L	V (AC peak or DC)	60
Load Current	I _L	mA	500
Peak Load Current	I _{Peak}	A	2.0
Output Power Dissipation	P _{Out}	mW	80
RELAY SPECIFICATIONS			
Total Power Dissipation	P _T	mW	118
I/O Breakdown Voltage	V _{I/O}	V _{rms}	3750
Operating Temperature	T _{Opr}	°C	-40 ~ +125
Storage Temperature	T _{Stg}	°C	-40 ~ +135

CT136HT/CS136HT ELECTRICAL SPECIFICATIONS (Ambient Temperature: 25°C)						
Parameters	Symbol	Test Conditions	Units	Min	Typ	Max
INPUT						
LED Forward Voltage	V _F	I _F =10mA	V	1.0	1.25	1.5
Operation LED Current	I _{F On}	I _L =Rating	mA		3.0	8.0
Recovery LED Voltage	V _{F Off}		V	0.5	1.1	
OUTPUT						
On-Resistance Drain to Drain	R _{On}	I _F =10mA, I _L =Rating Time to flow is within 1 sec.	Ω		0.12	0.3
Off-State Leakage Current	I _{Leak}	I _F =0mA, V _L =60V	μA			10.0
Output Capacitance	C _{Out}	V _L =0V, f=1MHz	pF		470	
TRANSMISSION						
Turn-On Time	T _{On}	I _F =10mA, I _L =Rating	ms		2.20	5.0
Turn-Off Time	T _{Off}		ms		0.04	0.5
COUPLED						
I/O Insulation Resistance	R _{I/O}		Ω	10 ⁹		
I/O Capacitance	C _{I/O}	f=1MHz	pF		1.0	

Environmental Ratings:

Operating Temp: -40°C to +125°C; Storage Temp: -40 to +135°C.
All electrical parameters measured at 125°C unless otherwise specified.

CT136HT/CS136HT SERIES GRAPHS

